

CONNECTING WITH THE *EXPERTS*

佳運重機械工程

興櫃前法人說明會 | 股票代號 7783 | 發布日期 10/17



www.giant-project.com



免責聲明

本簡報及同時發佈之相關訊息所提及之前瞻性陳述，包含營運展望、財務狀況及業務預測等內容，係本公司基於內部資料及外部整體經濟發展現況所得之資訊。

本簡報之陳述可能會表達出本公司對未來願景之信心與期望，實際結果與上開前瞻性陳述可能有所差異，其原因可能來自於這種因素，包括但不限於市場需求變化、價格波動、國際政策法令與整體經濟狀況，以及其他本公司無法掌握之風險等因素。

本簡報中所提供之資訊並未明示或暗示地表達或保證其具有正確性、完整性或可靠性。對於這些資訊，未來若有任何變更或調整時，本公司不負責隨時更新，亦不就使用本簡報內容或上述前瞻性陳述所引發之損害負責。



Everything Between Point A and Point B – and More

MORE THAN HEAVY LIFTING

Heavy Lifting

Heavy Transportation

Design & Engineering

Operations & Execution

Project Management

Client Interface

160⁺
local employees

10⁺
years in business

1,200m⁺
revenue

Locations

Quality Management System



ISO 9001
BSI 2022



ISO 14001
BSI 2022



ISO 45001
BSI 2022



ISO 27001
BSI 2022



Executive Management

Title	Name	Experience
董事長	張林桂	中央大學土木碩士 佳音重機企業有限公司副總經理
總經理	簡忠榮	美國肯薩斯州貝克大學管理碩士 陸海股份有限公司副總經理
專案業務處長	王嘉琳	臺灣大學事業經營所碩士 康舒科技股份有限公司業務副理
環安衛處協理	蒙彥良	清華大學動力機械研究所碩士 中華民國工業安全衛生協會專案經理
財會處處長	陳靜怡	真理大學會計系學士 銘旺實業股份有限公司財務長兼發言人
總經理特助	孫慶旺	明新科技大學企管系 佳運重機械工程股份有限公司工務處處長

2013

Beginning



2016

LinKuo PS



2019

Formosa I

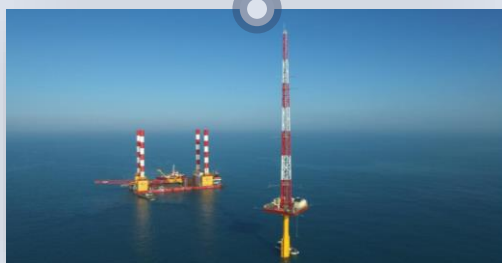


2023

Submarine

2015

Wind Mast



2017

ISO Certificated
ALE/Mammoet

2020

TIPH



2024

Apply for IPO

TAIWAN

OWF GROWTH AND EXPANSION

520 MW

2020

5.5 GW

2025

15 GW

2035

40-55 GW

2050



Prospects - Future Business Plan & Target

Short and Mid-Term Goals

OWF market is still exploding for more than 10 years

Stepping in OWF O&M market

Massive Onshore WTG to be upgraded

Industrial gases yard construction project

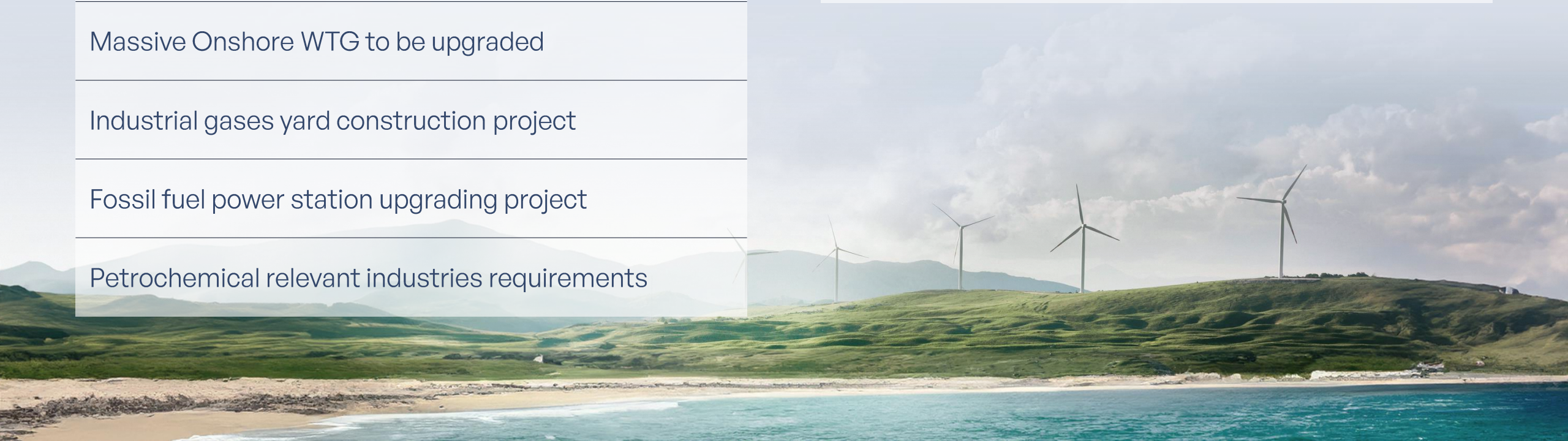
Fossil fuel power station upgrading project

Petrochemical relevant industries requirements

Long-Term Goals

APAC onshore WTG project

APAC power station construction project

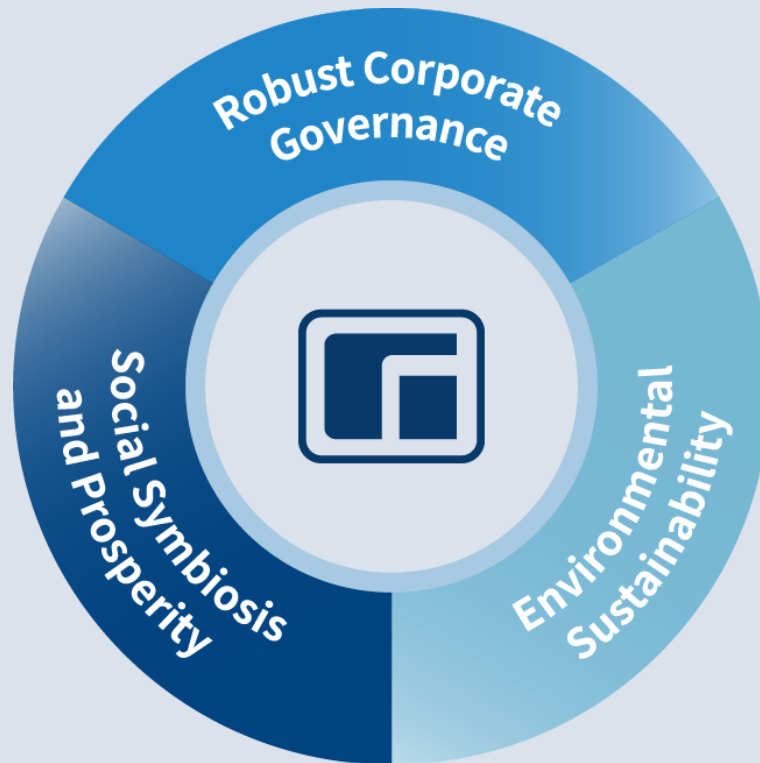


Initiative in 2022, Schedule **ESG** Developing Timeline



Download the ESG report





Independent Verification Opinion

Verification Opinion No.:
C069959-2023-AG-TWN-DNV

Issued Place:
Taipei

Issued Date:
30 July, 2024

This is to verify initiate reporting of Greenhouse Gas Inventory Management Report (2023) of

GIANT HEAVY MACHINERY SERVICE CORP.

Scope of Verification

DNV Business Assurance (DNV) has been commissioned by GIANT HEAVY MACHINERY SERVICE CORP. ("the Organization") to perform a verification of the greenhouse gas statements of Greenhouse Gas Inventory Management Report (2023) (hereafter the "Inventory Report") with respect to the sites listed in Appendix A.

The Reporting Boundary for the verification including direct GHG emissions and removals, indirect GHG emissions from imported energy, indirect GHG emissions from transportation and indirect GHG emissions from products used by the Organization. The further descriptions for the Reporting Boundary listed in Appendix B.

Verification Criteria and GHG Programme

The verification was performed on the basis of ISO 14064-1:2018 as well as criteria given to provide for consistent GHG emission identification, calculation, monitoring and reporting. The verification was conducted in accordance with ISO 14066:2011, ISO 14065:2020, ISO14064-3:2019

Verification Opinion

It is DNV's opinion that the Inventory Report (2023), which was published on June 28, 2024 (Ver. 2), is free from material discrepancies in accordance with the verification criteria identified as stated above. The opinion is decided based on the following approaches,

- For the Direct (Category 1) and Indirect GHG emissions from imported energy (Category 2), the reliability of the information within the Inventory Report (2023) were verified with reasonable level of assurance.
- For the other indirect GHG emissions, the involved information was verified and tested using agreed-upon procedures, AUP, defined in Inventory Report.

Also, the GHG information as stated in Appendix C has been verified during the process.

Jesse Wu
GHG Verifier

Jesse Wu

Place and date:
Taipei, 30 July, 2024

For the issuing office:
DNV Business Assurance Co., Ltd.
29FL, No. 293, Sec. 2, Wenhua Rd.,
Banqiao District, New Taipei City
220, Taiwan

David Chen
Management Representative

Lack of fulfillment of conditions as set out in the Certification Agreement may render this Certificate invalid. This Verification Opinion is based on the information made available to us and the engagement conditions detailed above. Hence, DNV cannot guarantee the accuracy or completeness of the information. DNV cannot be held liable for any party relying on or acting upon this Verification Opinion.
DNV Business Assurance Co., Ltd. 29FL, No.293, Sec.2, Wenhua Road 220 Ban Qiao Dist., New Taipei City Taiwan TEL: +886-2-82537800, website: <https://www.dnv.com/tai>
DNV 294781-CP-150, Rev.12, 2024.4

3 GOOD HEALTH
AND WELL-BEING



4 QUALITY
EDUCATION



7 AFFORDABLE AND
CLEAN ENERGY



8 DECENT WORK AND
ECONOMIC GROWTH



9 INDUSTRY, INNOVATION
AND INFRASTRUCTURE



11 SUSTAINABLE CITIES
AND COMMUNITIES



12 RESPONSIBLE
CONSUMPTION
AND PRODUCTION



13 CLIMATE
ACTION



14 LIFE
BELOW WATER



Partnership Advantages



Global vision and footprint

Industry-leading experts

Wide industry knowledge

QHSE leader



Local expertise and experience

Established local networks

Access to players

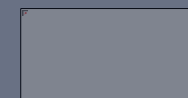
Compliant with local regulations



Giant Has Existing
RELATIONSHIPS



With Most Of Topic's
**POTENTIAL
CLIENTS**



Paid-in

Capital

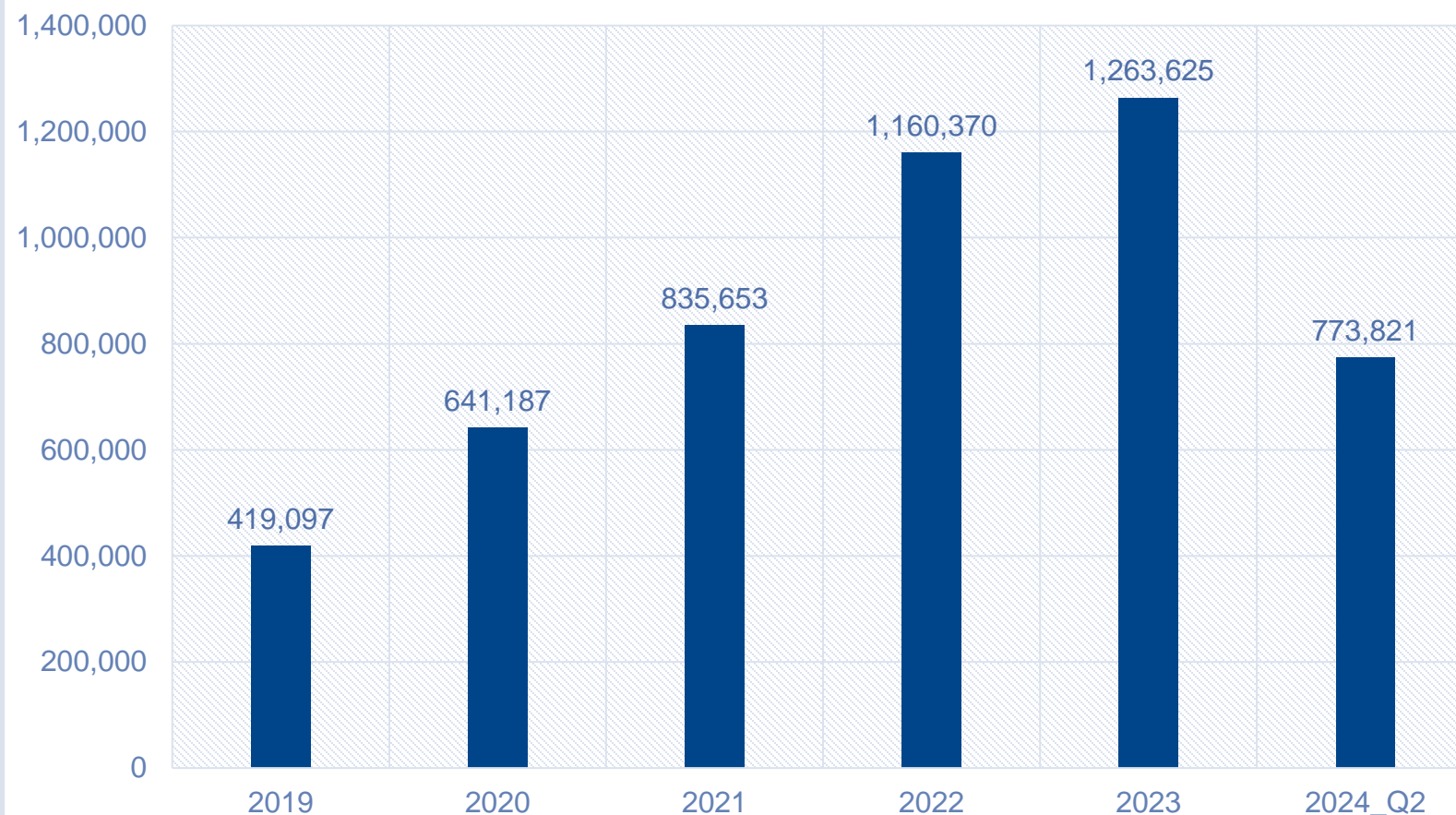
NT\$624,448,000

Revenue

Growth

Year-over-year

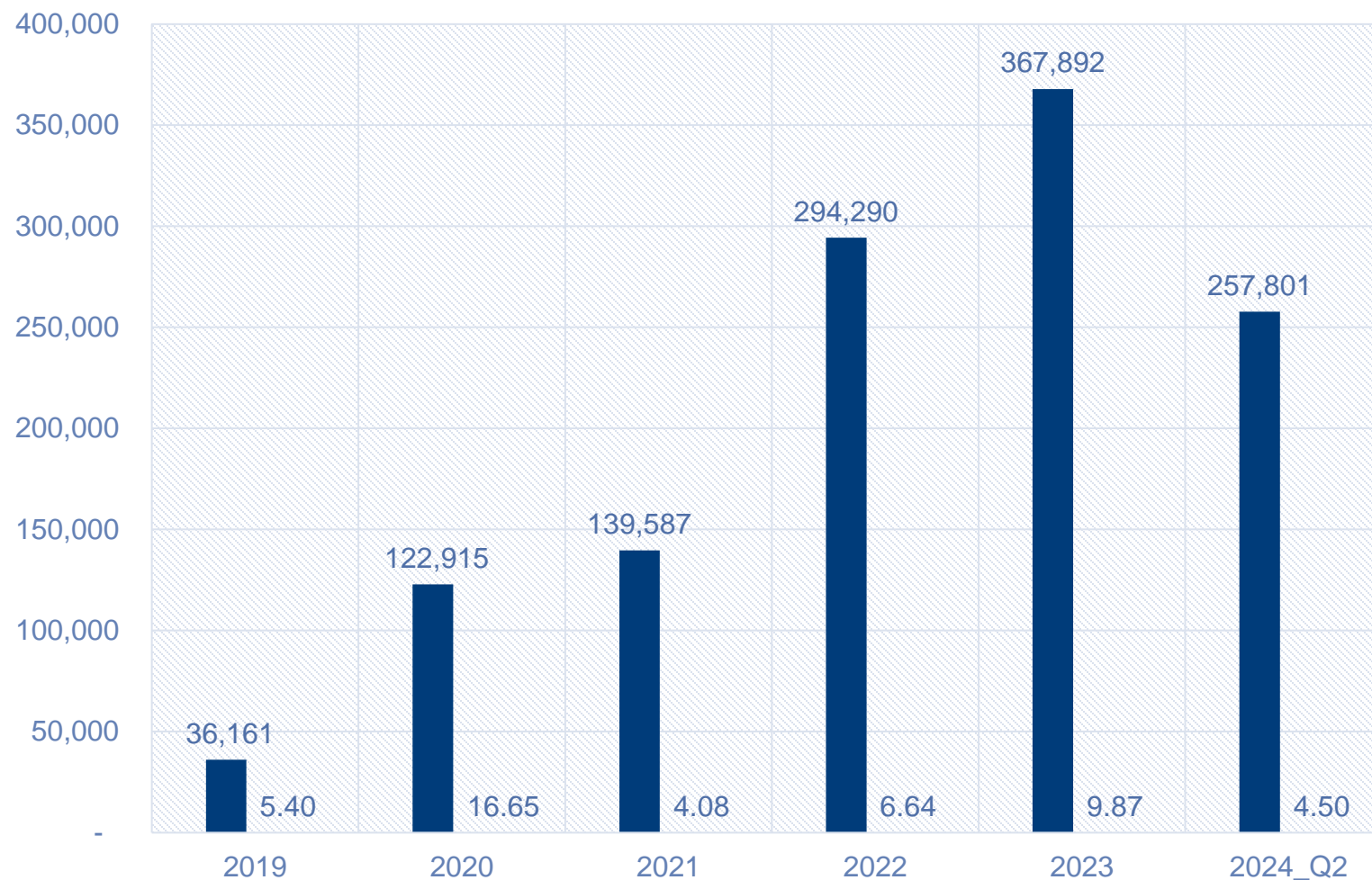
Annual Revenue (in NT\$ thousand)



2019-2024

Performance

Earning per share (in NT\$)



2019 – 2024 Financial Summary (in NT\$ thousand)

項目	2019		2020		2021		2022		2023		2024_Q2	
	金額	%	金額	%	金額	%	金額	%	金額	%	金額	%
營業收入	419,097	100.00	641,187	100.00	835,653	100.00	1,160,370	100.00	1,263,625	100.00	773,821	100.00
營業毛利	103,102	24.60	220,193	34.34	248,141	29.69	491,009	42.31	566,486	44.83	372,147	48.09
營業淨利	48,184	11.50	137,438	21.43	150,794	18.05	321,607	27.72	367,708	29.10	264,887	34.23
稅後淨利	36,161	8.63	122,915	19.17	139,587	16.70	294,290	25.36	367,892	29.11	257,801	33.32
每股盈餘 (元/股)	5.40		16.65		4.08		6.64		9.87		4.50	

Petrochemical Industries



1,700
Tons

80
axle lines

Wash Tower

Formosa Plastics Group



800
tons

40
axle lines

Reactor

Formosa Plastics Group



Onshore Wind Farm



MORE THAN **310+**
ONSHORE WTG
INSTALLATIONS

- Wind Farm Access Study
- Project Logistic Management
- Inland Transport
- WTG Lifting
- WTG Assembling & Installation
- Aerial Working Platform



International Standard

Safety Factor

2013 CRANE & RIGGING WORKSHOP
SEPTEMBER 18-20, 2013

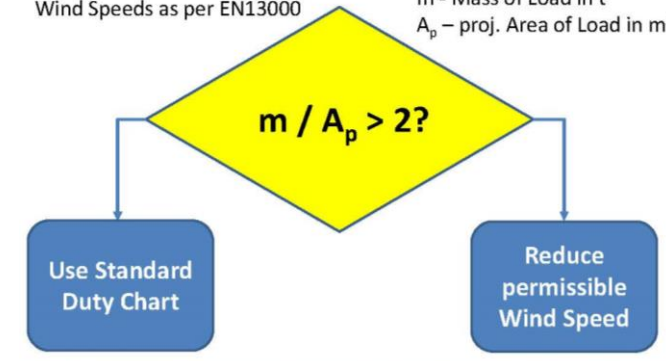


• Outrigger Force/Crawler Ground Pressure



Wind Speeds as per EN13000

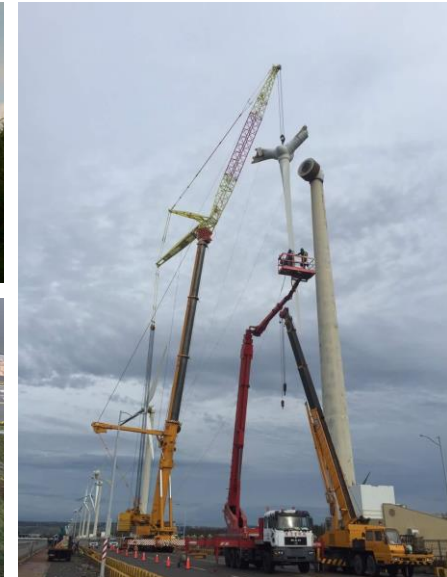
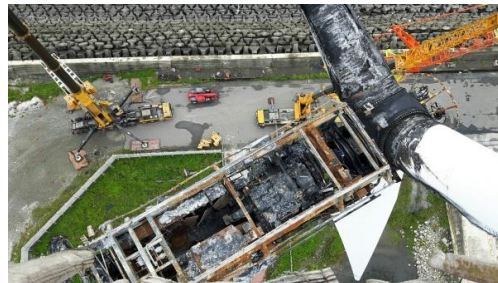
m - Mass of Load in t
 A_p - proj. Area of Load in m^2



Safety

- Compliance with international safety and quality Standards
- “Never having to say no”

Wind Turbine Dismantling Work



Rolling Stock Transport



Rolling Stock Transport



Rolling Stock Transport



Rolling Stock THSR



Rolling Stock MRT



Industrial Gases Yard Construction



Feasibility

Assist to study the
feasibility
to construct on site gas
yard



Always Deliver

Make a plan and
Stick to plan



Innovation

EMPOWERING MINDSET

- positive, “can-do” attitude
- entrepreneurial team spirit
- innovation-driven culture
- better results for demanding
- international customers





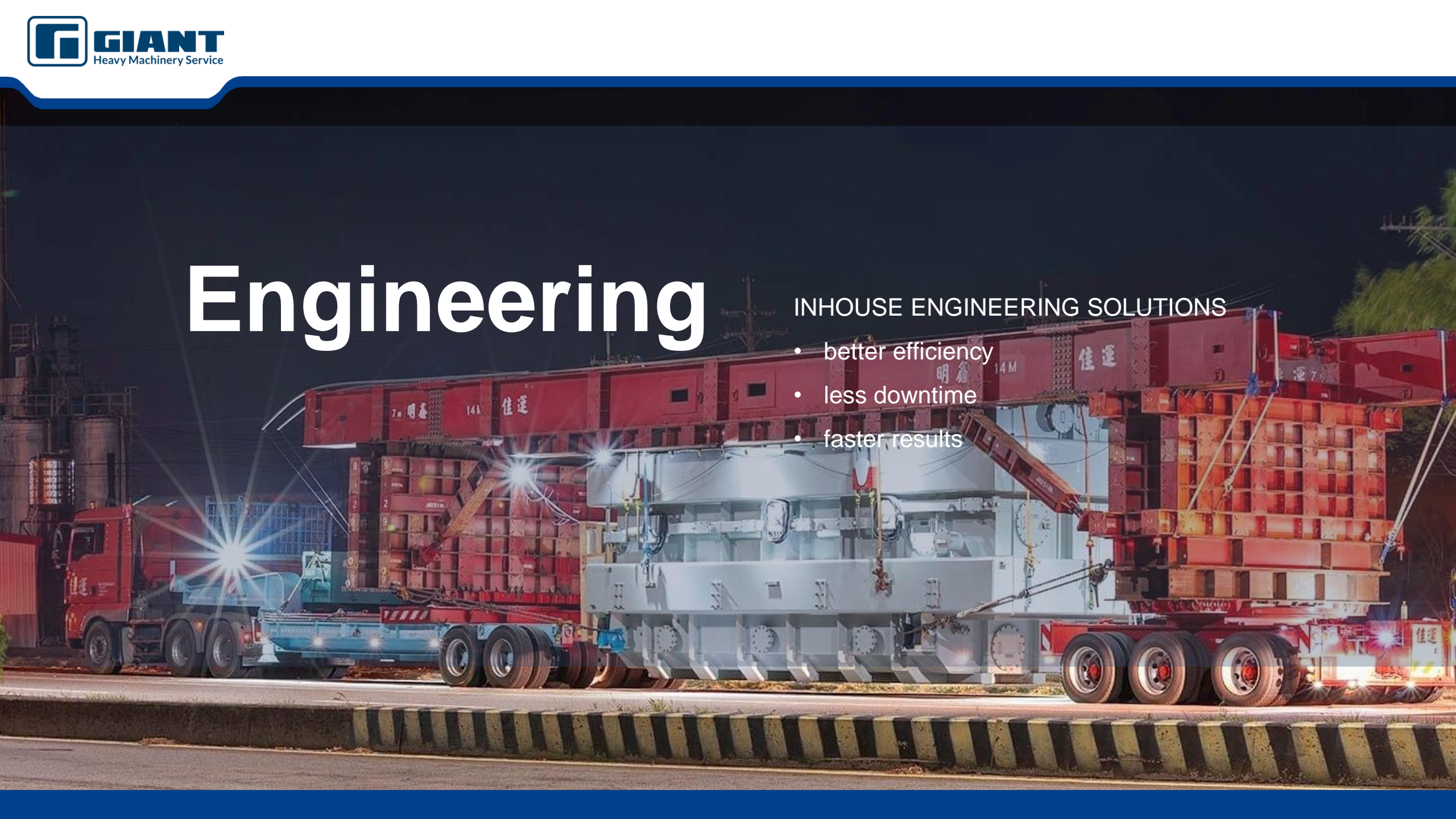
Various Special Project



Engineering

INHOUSE ENGINEERING SOLUTIONS

- better efficiency
- less downtime
- faster results







Nanfang'ao Bridge

Suao , Yilan

Green Jade

Boom Rest Transport



Tuo Chiang-Class Corvette

Transport Scope



Fishing Training Ship

Transport Scope





Sinda Power Station

Lifting Scope



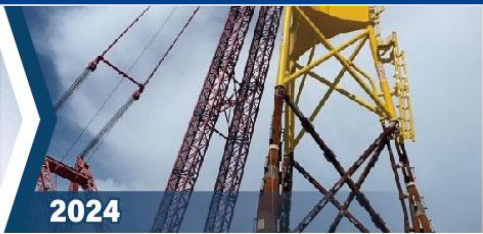
CSBC Submarine

RoRo Scope

— KS Port

Offshore Wind Farm





2019

Formosa 1

Jan De Nul

- 20 monopiles weighing 1200t each, together with transition pieces transported from fabrication facility in Germany, to Port of Taichung, Taiwan.
- 465t transition pieces loaded-out onto a custom-built transport frame.
- 96 axes-lines of SPMT in a 4 file 16 configuration used for the load-out.
- Crane lifting performed with Demag CC6800 and CC8800 cranes.

2020

Yunlin OWF

Yunneng Wind Power Co., Ltd.

- Load-in, load-out and jacking of monopiles
- Offloading of modules from vessel
- **Sapura Offshore Sdn. Bhd. Taiwan Branch**
- Supply of SPMTs and personnel for offshore work; Manpower support for barge ballasting
- **Jumbo Shipping VOF**
- Supply of welders/cutters to install hinge and provision of NDT test

Greater Changhua OWF

Sing Da Marine Structure Corporation (SDMS)

- Lifting, transport and assembly of jackets
- **HEEREMA MARINE CONTRACTORS NED. SE**
- Marshalling yard and pinpile transportation
- **CHII (Century)**
- Pinpile transportation
- **CSBC CORPORATION, TAIWAN**
- Storage, transport and load-out of pin piles

2021

Yunlin OWF

Yunneng Wind Power Co., Ltd.

- Load-in, load-out and jacking of monopiles
- **Wind Cable Services Asia B.V.**
- Offloading of modules from vessel
- **Sapura Offshore Sdn. Bhd. Taiwan Branch**
- Supply of SPMTs and personnel for offshore work; Manpower support for barge ballasting
- **Jumbo Shipping VOF**
- Supply of welders/cutters to install hinge and provision of NDT test

Changfang Xidao OWF

Century Wind Power Co., Ltd.

- Transported 8 jackets of around 1500t each, provided load-in, load-out and weighing for jackets

Greater Changhua OWF

HEEREMA MARINE CONTRACTORS NED. SE

- Supply of SPMTs for offshore wind work
- **CSBC CORPORATION, TAIWAN**
- Storage, transport and load-out of pin piles

Sing Da Marine Structure Corporation (SDMS)

- Lifting, transport and assembly of jackets
- **Taiwan International Ports Heavy-Machinery Corporation Ltd.(TIPH)**
- Nacelle load in and out
- **CHII (Century)**
- Pinpile transportation
- **HEEREMA MARINE CONTRACTORS NED. SE**
- Marshalling yard and pinpile transport

2022

Yunlin OWF

Yunneng Wind Power Co., Ltd.

- Load-in, load-out and jacking of monopiles

Greater Changhua OWF HEEREMA MARINE CONTRACTORS NED. SE

- Marshalling yard and pinpile transportation
- **Taiwan International Ports Heavy-Machinery Corporation Ltd. (TIPH)**
- Nacelle load in and out
- **HEEREMA MARINE CONTRACTORS NED. SE**
- Supply of SPMTs for offshore wind work

ZhongNeng OWF

Sing Da Marine Structure Corporation (SDMS)

- Lifting and transportation of jackets

Changfang Xidao OWF

Century Wind Power Co., Ltd.

- Project management and engineering support; supply of SPMTs and personnel

2023

Yunlin OWF

Yunneng Wind Power Co., Ltd.

- Onshore scope with load-in, load-out and jacking of monopiles.
- Marine scope for moving monopiles for installation incl. offshore SPMTs.
- Harbor management of all barges going offshore

ZhongNeng OWF

CSBC-DEME Wind Engineering Co., Ltd.

- Load-out of pin piles with MTC-15 crane
- Pin pile installation template load-in, load-out and installation.
- Piling template installation under the Apollo jack-up vessel
- **Sing Da Marine Structure Corporation (SDMS)**
- Full jacket load-in and load-out by crane
- Lifting and transportation of full jackets and its components within the fabrication yard
- Transport jacket components within fabrication yard
- **CTCI Machinery Corporation**
- Transport of pin piles

Changfang Xidao OWF

Century Heavy Industry International Co., Ltd.

- Transportation of pin piles
- Transport jacket components within fabrication yard
- Jacket load-in and load-out by RoRo
- **CTCI Machinery Corporation**
- Transportation of pin piles
- **Synergy Construction Co., Ltd.**
- Transportation of naval vessel

2024

Yunlin OWF

Yunneng Wind Power Co., Ltd.

- Onshore scope with load-in, load-out and jacking of monopiles.
- Marine scope for moving monopiles for installation incl. offshore SPMTs.
- Harbor management of all barges going offshore

ZhongNeng OWF

Sing Da Marine Structure Corporation (SDMS)

- Full jacket load-in and load-out by crane
- Lifting and transportation of full jackets and its components within the fabrication yard
- Transport jacket components within fabrication yard
- **Taiwan International Port Heavy Machinery**
- Vestas 8MW nacelle transport
- Vestas blade transport
- Vestas tower section transport

Hai Long OWF

CSBC Corporation Taiwan

- Pinpiles section transport during manufacturing period
- Transportation of pin piles
- Transport pinpiles for loadout

Taiwan International Port Heavy Machinery

- SGRE transport 14MW nacelle generator
- SGRE transport tower section

Greater Changhua 2204

Orsted

- Suction bucket jacket loadout and transport
- Support structure assembly and positioning

OWF Subsea cable

Wind NL

- Subsea cable spooling operation
- Cable spooling storage and transport

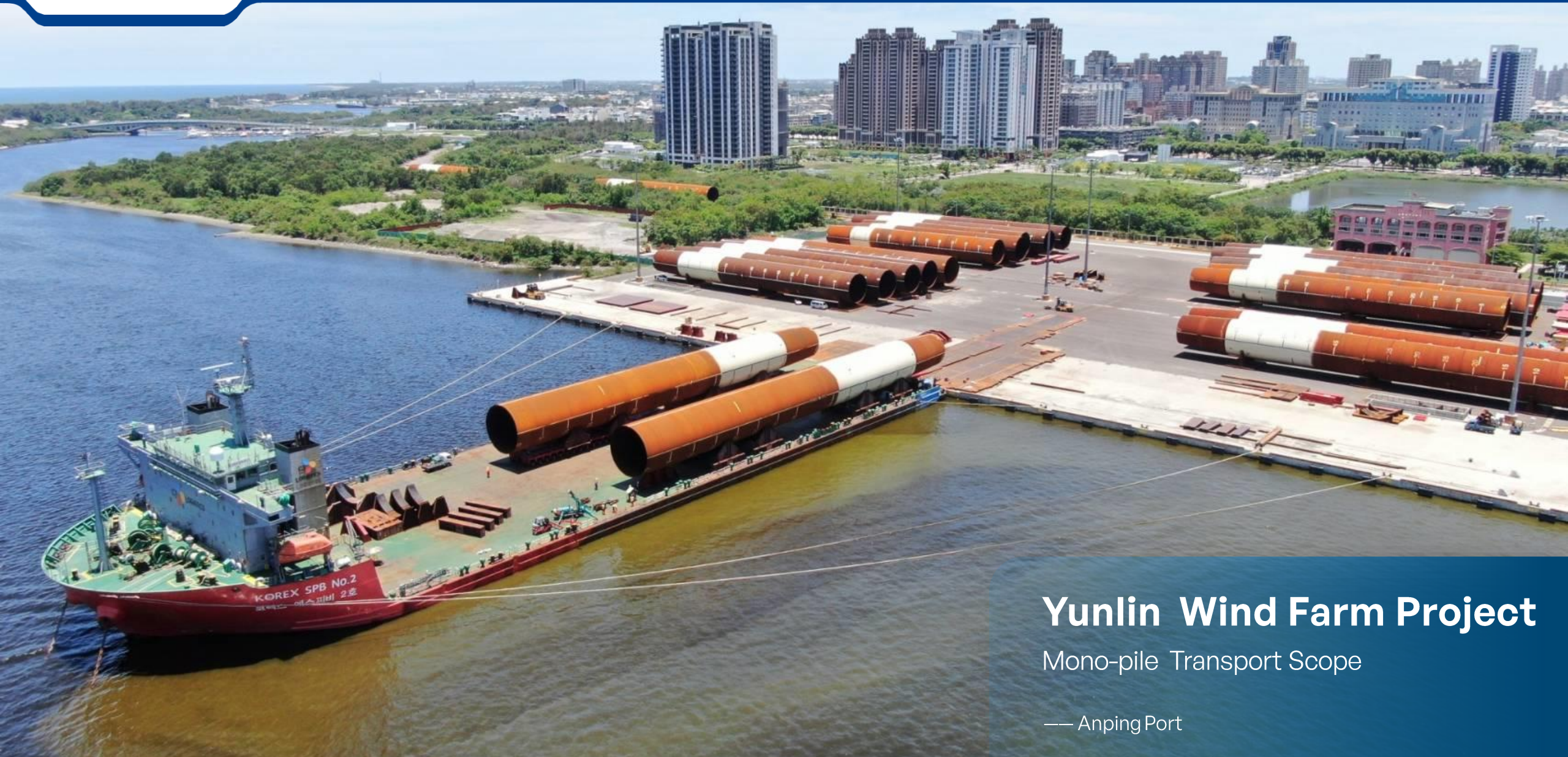




F1 Wind Farm Project

Mono-pile, TP Transport & Lifting Scope

— Taichung Port



Yunlin Wind Farm Project

Mono-pile Transport Scope

— Anping Port



GCH & ZN Wind Farm Project

—SDMS



ZN Wind Farm Project

— SDMS



GCH Wind Farm Project

— SDMS



CFXD & GCH Wind Farm Project

— Taipei Port



ZN Wind Farm Project

— KS Port

— KS Port

Siemens

**NACELLE TRANSPORT
BARGING &
BALLASTING**

— Taichung Port



Siemens NACELLE TRANSPORT BARGING & BALLASTING

— Taichung Port





Zhongneng & TPCII

Vestas WTG Transport

Taichung Port 2023-2025

Zhongneng & TPCII

Vestas WTG Transport

Taichung Port 2023-2025



2024年10月11日 00:28:57
台中港
臺中市

Hai Long

SGRE WTG Transport

Taichung Port 2024-2026



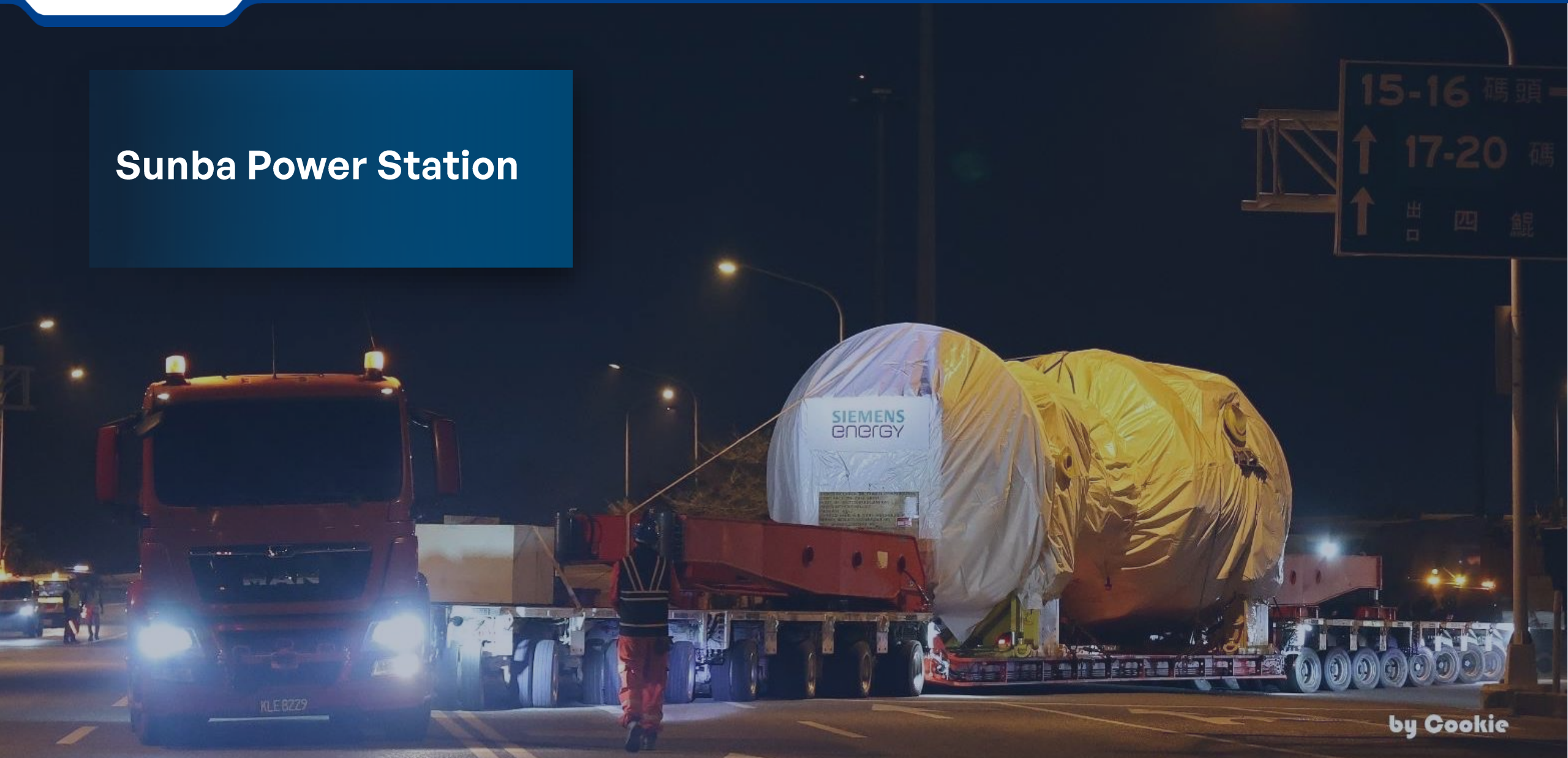
Power Station



Sinda Power Station



Sunba Power Station



by Cookie



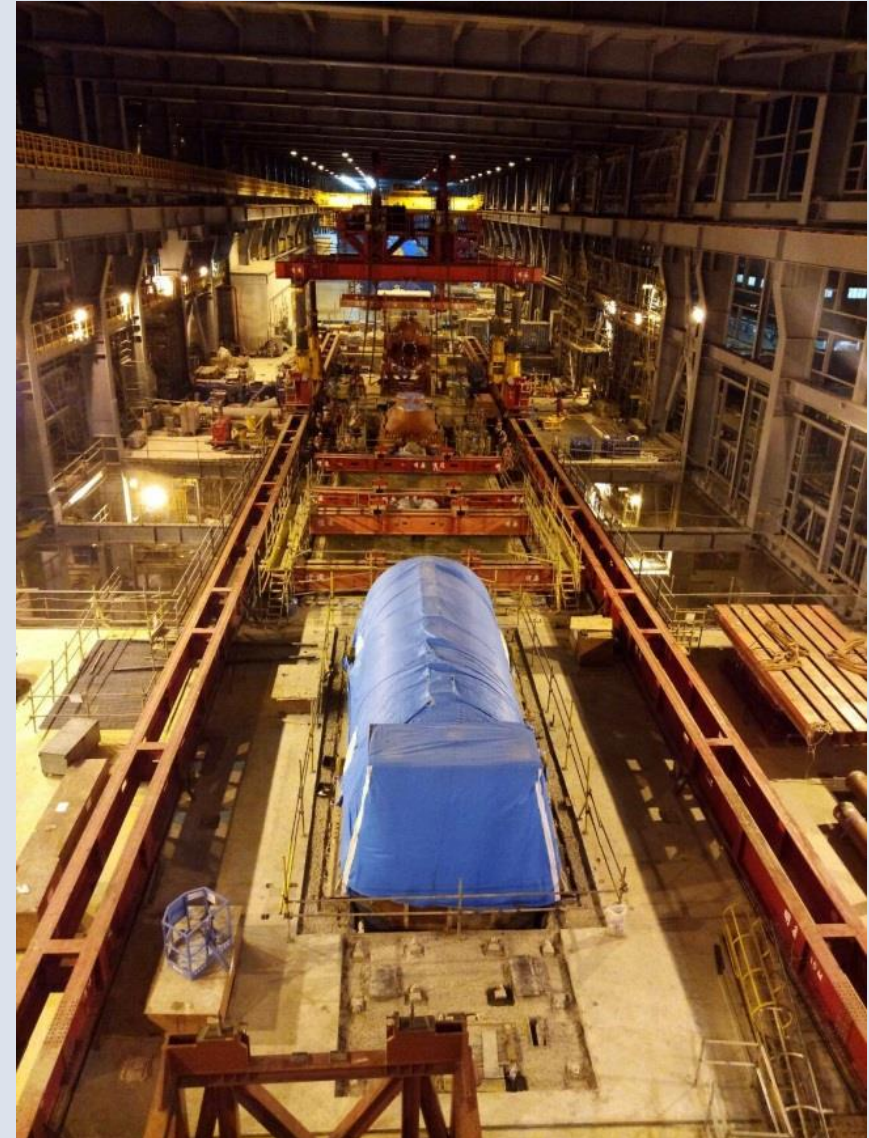
Sunba Power Station

Onbase Scope



Gantry Lifting

Solution Provider





Thank You

